

COMPOSITE NO HARD WATER BYPASS VALVE INSTALLATION GUIDE

V3070FF NO HARDWATER BYPASS 1/125 F-F

V3070FM NO HARDWATER BYPASS 1/125 F-M

WARNING: USE ONLY SILICONE-BASED LUBRICANTS ON ALL CLACK CORPORATION COMPONENTS
HYDROCARBONS WILL DAMAGE COMPONENTS THAT CONTAIN O-RINGS AND OR PLASTIC. THIS CAN CAUSE
LEAKS OR BREAKAGE. DO NOT USE LUBRICANTS THAT CONTAIN HYDROCARBONS SUCH AS VASELINE®/
PETROLEUM JELLY, WD-40®, ETC. DO NOT USE CLACK CONTROL VALVE PRODUCTS ON WATER SUPPLIES THAT
CONTAIN HYDROCARBONS, SUCH AS BENZENE, GASOLINE, KEROSENE, ETC.

OPERATING PRESSURES: 20 PSI - 125 PSI

OPERATING TEMPERATURES: 40°F - 110°F

PARTS INCLUDED:

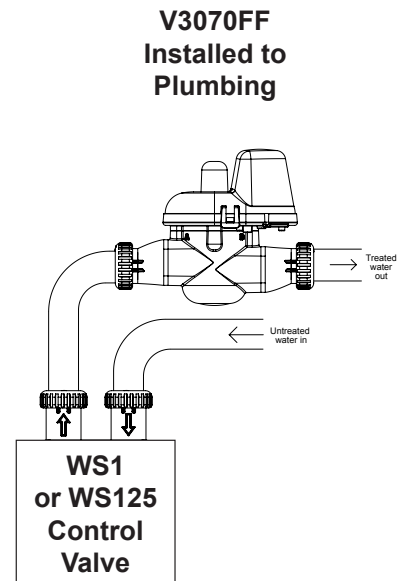
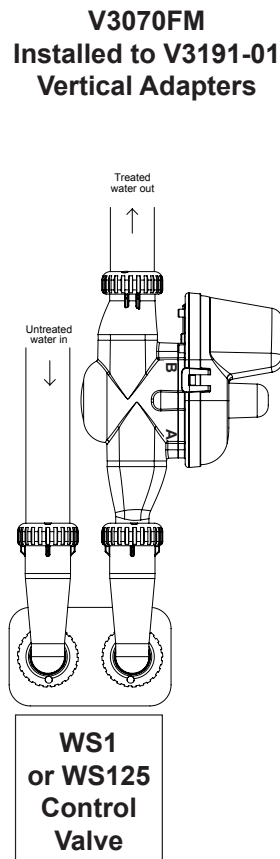
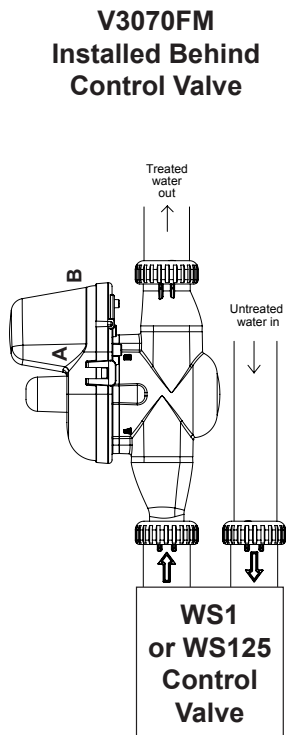
NBV • NO BYPASS VALVE

V3805 • STRAIN RELIEF COVER KIT

If the control valve manual does not include programming instructions for setting up Simple Twin Alternating (ALT A and ALT B), Separate Source (SEPS), or No Hard Water Bypass (NHBP), please contact your local equipment supplier for current instructions.

Cables: To bring in additional cables through the back plate, first locate the strain relief knockout on the inside of the back plate (lower-right side). Use a punch and hammer to remove the knockout. Remove one or both tabs in the strain relief on the back of the back plate with a needle nose pliers. Bring the additional cables through the knockout hole through the back plate and connect each cable to the proper location on the PCB. This will determine how much slacks needed in the cable before weaving into the strain relief. Once cables are weaved into the strain relief, use the V3805 strain relief cover kit (provided) and follow instructions for installation.

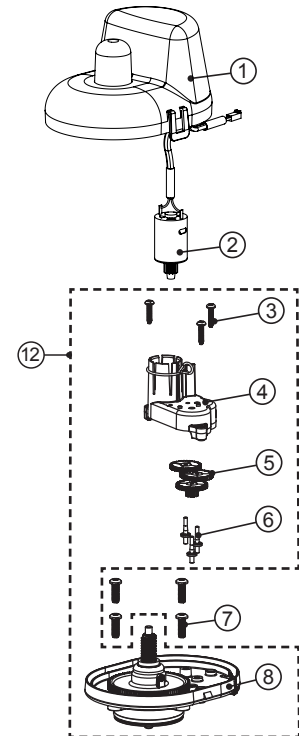
NBV—No Hard Water Bypass Valve: This will shut off water to the outlet during regeneration. Thread the NBV cable through the backplate and connect to the PCB two-pin connector labeled MAV or Bypass. Program the valve as NHBP. The NBV will close before the first regeneration cycle that is not FILL, SOFTENING, or FILTERING and open after the last regeneration cycle that is not FILL. If the control valve enters an error state during regeneration mode, the NBV will remain in its current state until the errors corrected and reset.



COMPOSITE NO HARD WATER BYPASS VALVE INSTALLATION GUIDE

1.0"/1.25" NO HARDWATER BYPASS • V3070FF

Drawing No.	Order No.	Description	Qty.
1	V3073	MAV/NOHWBY COVER ASY	1
2	V3476	WS MOTOR ASY 8 FT	1
3	V3592	SCREW #8-3/4 PHPN T-25 SS	3
4	V3262-01	WS1.5&2ALT/2BY REDUCGEARCVRASY	1
5	V3110-01	WS1 DRIVE REDUCING GEAR PLAIN	3
6	V3264	WS2 BYPASS REDUCTION GEAR AXLE	3
7	V3527	SCREW 1/4-20 X 3/4 BHSCS SS	4
8	V3072	MAV/NOHWBY 1/125/15 DRIVE ASY	1
9	V3506-01	MAV/NOHRD 1/125/15 PISTON	1
10	V3074	MAV 1/125/15 STACK ASY	1
11a	V3521FF	NOHRD WTR BYPASS BODY ASY F-F	1
12	V3042	WS1/1.25/1.5 MAV & NHWB SERVICE PACK	
Not Shown	V3805	STRAIN RELIEF COVER KIT	1



1.0"/1.25" NO HARDWATER BYPASS • V3070FM

Drawing No.	Order No.	Description	Qty.
1	V3073	MAV/NOHWBY COVER ASY	1
2	V3476	WS MOTOR ASY 8 FT	1
3	V3592	SCREW #8-3/4 PHPN T-25 SS	3
4	V3262-01	WS1.5&2ALT/2BY REDUCGEARCVRASY	1
5	V3110-01	WS1 DRIVE REDUCING GEAR PLAIN	3
6	V3264	WS2 BYPASS REDUCTION GEAR AXLE	3
7	V3642	SCREW 1/4-20 X 1 1/4 BHSCS SS	4
8	V3072	MAV/NOHWBY 2 DRIVE ASY	1
9	V3506-01	MAV/NOHWBY 2 PISTON	1
10	V3074	WS2 MAV STACK ASSEMBLY	1
11b	V3521FM	WS2 PLASTIC MAV BODY NPT	1
12	V3042	WS2 MAV & NHWB SERVICE PACK	
13	V3151	WS1 NUT 1 QC	2
14	V3150	WS1 SPLIT RING	2
15	V3105	O-RING 215	2
Not Shown	V3805	STRAIN RELIEF COVER KIT	1
	V3191-01	WS1 BYPASS VERTICAL ADAPTER ASY	0-2

